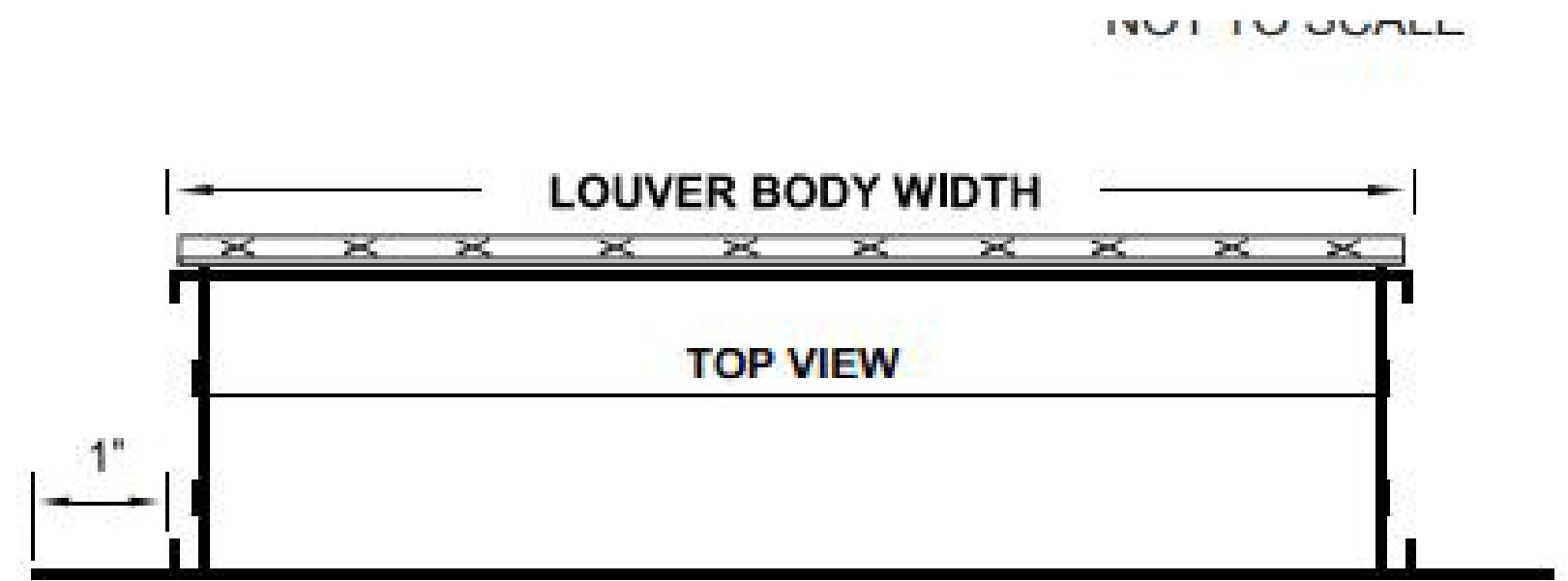
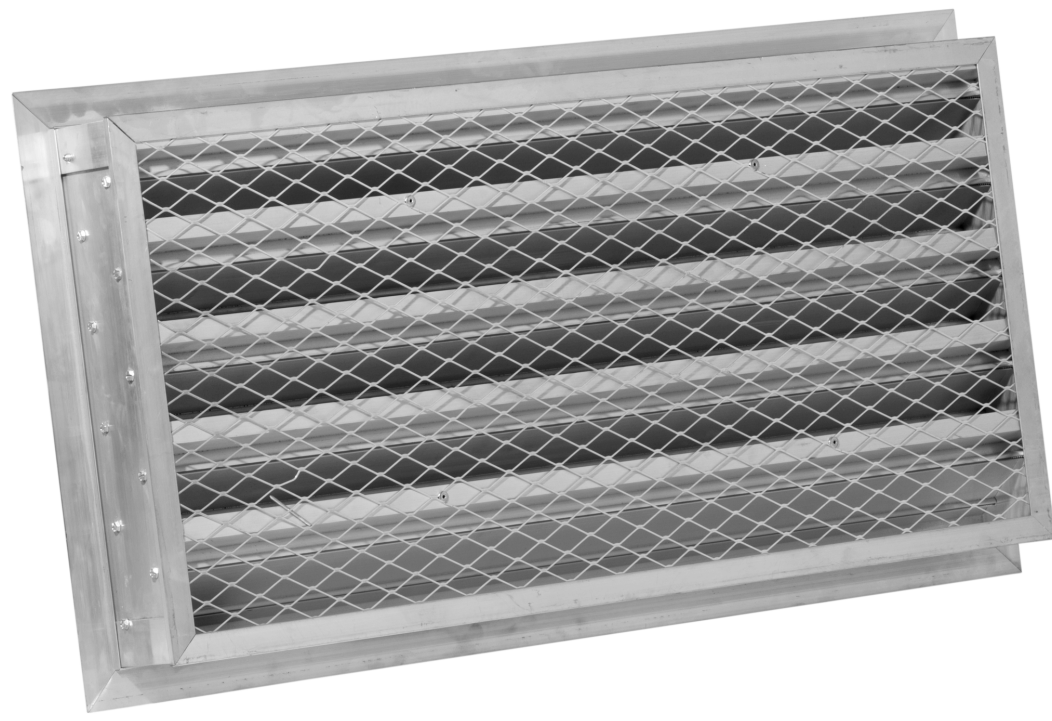


L230F 2" Flanged Frame



Standard Features

- ✓ **Depth:**
2 Inches
- ✓ **Frame Thickness:**
0.075" 6063-T5 Extruded Aluminium.
- ✓ **Blade Thickness:**
0.075" 6063-T5 Extruded Aluminium.
- ✓ **Blade Centres:**
3-1/2" (+/- 1/4")
- ✓ **Blade Angle:**
35°
- ✓ **Minimum Panel Size:**
12" x 12"
- ✓ **Maximum Panel Size:**
72" x 120"
- ✓ **Standard Finish:**
Mill Aluminum
- ✓ **Free Area :**
48"x48" Unit: 9.06 sq. ft. free area.
- ✓ **Free Area Percentage:**
56.6 Percent
- ✓ **Point of Water Penetration At:**
0.01 Oz/Ft2 (free area) 958 FPM

Optional Features

- ✓ **Bird Screens:**
3/4" x 0.52" Flattened Expanded Alum. (STD) | 1/4" x 1/4" inter crimped | Aluminum. | 1/2" x 1/2" inter crimped Aluminum.
- ✓ **Insect Screen:**
18" x 16" mesh, .011" diameter Alum. Wire
- ✓ **Flange Options:**
1-1/2", 2" & 3" (FL.)
- ✓ **Blade Centres:**
3-1/2" (+/- 1/4")
- ✓ **Finish:**
Clear Anodized, Integral, Anodized, Baked Powder Coat. RAL # _____
- ✓ **Accessories:**
Filter Track, Security Bars, Stainless Steel Screws, Aluminum Blank Off Panel, Custom Geometric Shapes, 1" or 2" Insulated Blank-off Panel, Extended Sill.